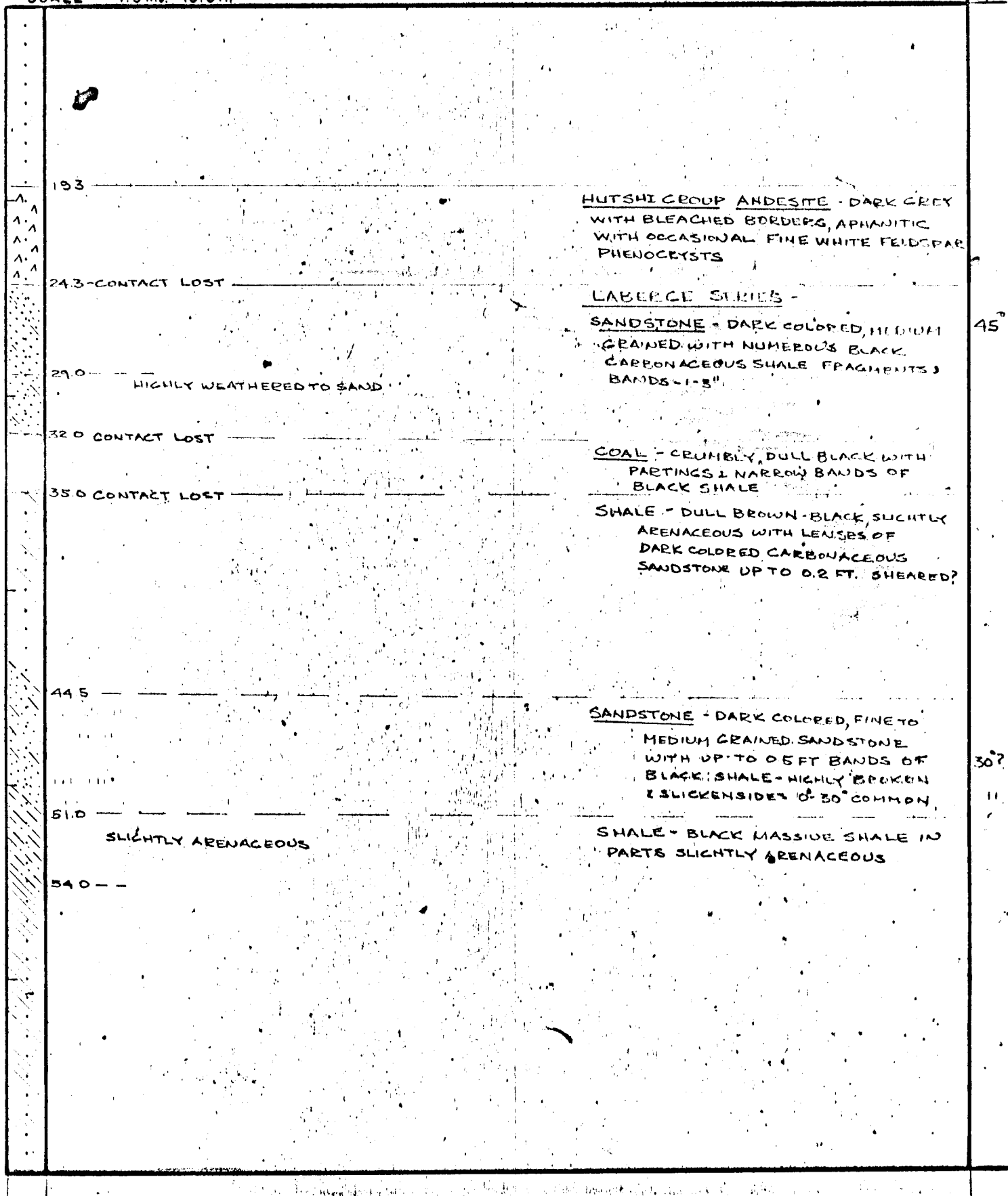


DRILL HOLE LOG
ARJAY KIRKER RESOURCES LTD.
NORDENSKIOLD COAL AREA

COORDINATES 22,321,629.36N;-19,156.44E
ELEVATION 2402.9
DIP -50°
AZIMUTH 040°
SCALE 1.5 ins. = 10.0 ft.

CORE SIZE HQ 0-82.0 FT.
HOLE STARTED 22 SEPTEMBER, 1972
HOLE COMPLETED 27 SEPTEMBER, 1972
LOGGED BY M.P. PHILLIPS

DIP



DRILL HOLE LOG

ARJAY KIRKER RESOURCES LTD
DIVISION MOUNTAIN COAL PROSPECT

COORDINATES :

DIP - 30

HOLE NO 4
PAGE 2 OF 2

LABERGE SERIES - SHALE - DARK COLORED
MASSIVE SLIGHTLY SANDY SHALE WITH
OCCASIONAL TO 0.2 FT DARK COLORED
SANDSTONE

740 - BLACK SANDY SHALE -
HIGHLY CRUMBLY

NO RECOVERY

820 - END OF HOLE - ABANDONED

DIP